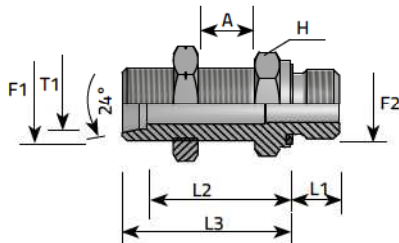


DIN MALE BULKHEAD CONNECTION - BSPP MALE FORM E



PASSAPARETE DIRITTO M DIN - M GAS CILINDRICO FORMA E
 UNION DOUBLE – TRAVERSÉE DE CLOISON BSPP FORME E
 GERADE SCHOTTVERSCHRAUBUNG FORM E – METRISCH 24° / AGR-Z
 RACOR RECTO PASATABIQUE BSPP FORMA E

F1 Metrisch, Metrico, Metric, Métrique, Métrico

F2 Zylinder-Gasgewinde, Gas cilíndrico, BSPP, Gaz cylíndrique,
 Gas cilíndrica

Code	Thread		Dimensions						Pressure		Series
	F1	F2	T1	H	A MAX	L1	L2	L3	Bar	Psi	L/S
			mm	mm	mm	mm	mm				
APPME06LMG02EL.1	12x1,5	1/8"	6	17	16	8	32,5	39,5	315	4568	L
APPME08LMG04EL.1	14x1,5	1/4"	8	19	16	12	34	41	315	4568	L
APPME10LMG04EL.1	16x1,5	1/4"	10	22	16	12	36	43	315	4568	L
APPME12LMG06EL.1	18x1,5	3/8"	12	24	16	12	37,5	44,5	315	4568	L
APPME15LMG08EL.1	22x1,5	1/2"	15	27	16	14	41	48	315	4568	L
APPME18LMG08EL.1	26x1,5	1/2"	18	32	16	14	44,5	52	315	4568	L
APPME22LMG12EL.1	30x2	3/4"	22	36	16	16	47,5	55	160	2320	L
APPME28LMG16EL.1	36x2	1"	28	41	16	18	50,5	58	160	2320	L
APPME35LMG20EL.1	45x2	1.1/4"	35	50	16	20	52,5	63	160	2320	L
APPME42LMG24EL.1	52x2	1.1/2"	42	60	16	22	53	64	160	2320	L
APPME06SMG04EL.1	14x1,5	1/4"	6	19	16	12	38	45	630	9137	S
APPME08SMG04EL.1	16x1,5	1/4"	8	22	16	12	39	46	630	9137	S
APPME10SMG06EL.1	18x1,5	3/8"	10	24	16	12	41,5	49	630	9137	S
APPME12SMG06EL.1	20x1,5	3/8"	12	27	16	12	42,5	50	630	9137	S
APPME14SMG08EL.1	22x1,5	1/2"	14	30	16	14	46	54	630	9137	S
APPME16SMG08EL.1	24x1,5	1/2"	16	32	16	14	45,5	54	400	5801	S
APPME20SMG12EL.1	30x2	3/4"	20	41	16	16	48,5	59	400	5801	S
APPME25SMG16EL.1	36x2	1"	25	46	16	18	52	64	400	5801	S
APPME30SMG20EL.1	42x2	1.1/4"	30	50	16	20	55,5	69	400	5801	S
APPME38SMG24EL.1	52x2	1.1/2"	38	65	16	22	56	72	315	4568	S