



# WATER MAX 130 °C\* - 100 bar

## AISI 304 STAINLESS STEEL

**Ex** ATEX directive  
IIB 2 GD c T4 T135 °C X

Supplied with:  
- hoses in black synthetic rubber  
- zinc plated steel couplings  
- AISI 304 stainless steel swivel joint  
- "Viton®" seals



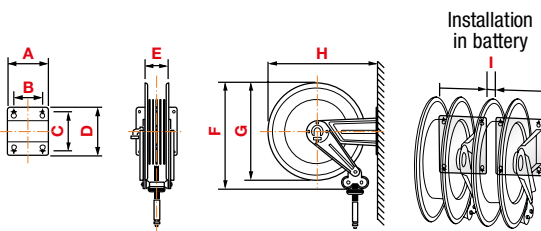
|   | FIXED      |            | SWIVELLING |         | Hose supplied        | Connection |              |
|---|------------|------------|------------|---------|----------------------|------------|--------------|
|   | Article    | Article    | Article    | Article |                      | inlet      | outlet       |
| <b>S. 330</b><br>hygienic hose                    | 8332.400   | -          | -          | -       | without hose         | F1/2"G     | F 3/8"-1/2"G |
|   | 8332.201   | -          | -          | -       | 12m - 3/8" (995.313) | F1/2"G     | M3/8"G       |
|   | 8333.202   | -          | -          | -       | 12m - 3/8" (995.412) | F1/2"G     | M3/8"G       |
| <b>S. 390</b><br>hygienic hose                    | 8392.200   | 8382.200   | -          | -       | without hose         | F1/2"G     | F3/8"-1/2"G  |
|   | 8392.202   | 8382.202   | -          | -       | 17m - 3/8" (995.318) | F1/2"G     | M3/8"G       |
|   | 8393.201   | 8383.201   | -          | -       | 12m - 3/8" (995.412) | F1/2"G     | M3/8"G       |
| <b>S. 430</b><br>hygienic hose                    | 8434.200   | 8424.200   | -          | -       | without hose         | F1/2"G     | F1/2"G       |
|   | 8432.201   | 8422.201   | -          | -       | 10m - 1/2" (996.311) | F1/2"G     | M1/2"G       |
|   | 8432.202   | 8422.202   | -          | -       | 15m - 1/2" (996.316) | F1/2"G     | M1/2"G       |
|   | 8433.202   | 8423.202   | -          | -       | 15m - 1/2" (996.415) | F1/2"G     | M1/2"G       |
| <b>for ABS hose reels Series 430 see page 153</b> |            |            |            |         |                      |            |              |
| <b>S. 530</b><br>hygienic hose                    | 8534.200   | 8524.200   | -          | -       | without hose         | F1/2"G     | F1/2"G       |
|   | 8532.201   | 8522.201   | -          | -       | 20m - 1/2" (996.321) | F1/2"G     | M1/2"G       |
|   | 8533.202   | 8523.202   | -          | -       | 25m - 1/2" (996.425) | F1/2"G     | M1/2"G       |
| <b>S. 540</b><br>hygienic hose                    | 8544.200   | 8554.200   | -          | -       | without hose         | F1"G       | F1"G         |
|   | 8542.202   | 8552.202   | -          | -       | 20m - 3/4" (997.320) | F1"G       | M3/4"G       |
|   | 8542.203 * | 8552.203 * | -          | -       | 15m - 1" (998.315)   | F1"G       | M1"G         |
|   | 8543.202   | 8553.202   | -          | -       | 20m - 3/4" (997.420) | F1"G       | M3/4"G       |
| <b>S. 560</b>                                     | 8564.200   | -          | -          | -       | without hose         | F1"G       | F1"G         |
|   | 8562.205 * | -          | -          | -       | 30m - 1" (998.330)   | F1"G       | M1"G         |

\* 50 bar

\* 50 bar

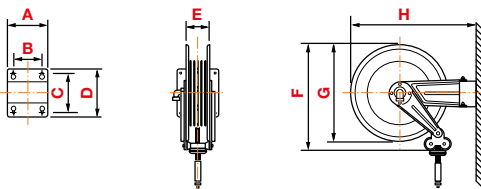
\* Effective temperature only for versions without hose. For the maximum temperature of the versions with hose, contact technical dept.

### FIXED OVERALL DIMENSIONS



| Art.   | A   | B   | C   | D   | E   | F   | G   | H   | I  | 1-m <sup>3</sup> | kg *          |
|--------|-----|-----|-----|-----|-----|-----|-----|-----|----|------------------|---------------|
| S. 330 | 186 | 140 | 196 | 226 | 110 | 355 | 350 | 365 | 20 | 0,045            | from 8 to 13  |
| S. 390 | 186 | 140 | 196 | 226 | 110 | 400 | 390 | 410 | 20 | 0,068            | from 11 to 18 |
| S. 430 | 186 | 140 | 196 | 226 | 115 | 460 | 420 | 460 | 20 | 0,098            | from 14 to 24 |
| S. 530 | 203 | 153 | 220 | 258 | 115 | 550 | 510 | 560 | 20 | 0,120            | from 19 to 42 |
| S. 540 | 300 | 218 | 228 | 268 | 190 | 550 | 510 | 573 | 0  | 0,175            | from 24 to 40 |
| S. 560 | 488 | 399 | 238 | 272 | 368 | 550 | 510 | 578 | 0  | 0,310            | from 30 to 80 |

### SWIVELLING OVERALL DIMENSIONS



| Art.   | A   | B   | C   | D   | E   | F   | G   | H   | 1-m <sup>3</sup> | kg            |
|--------|-----|-----|-----|-----|-----|-----|-----|-----|------------------|---------------|
| S. 380 | 184 | 146 | 106 | 144 | 110 | 400 | 390 | 484 | 0,098            | from 12 to 19 |
| S. 420 | 208 | 162 | 118 | 164 | 115 | 460 | 420 | 541 | 0,098            | from 15 to 25 |
| S. 520 | 228 | 182 | 154 | 200 | 115 | 560 | 510 | 642 | 0,120            | from 20 to 43 |
| S. 550 | 300 | 218 | 226 | 268 | 190 | 560 | 510 | 702 | 0,175            | from 25 to 41 |

\* The list shows min and max weight for each series: min weight refers to version without hose, max weight refers to heaviest version which depends on hose length and diameter.



# WATER MAX 130 °C - 100-200-400 bar

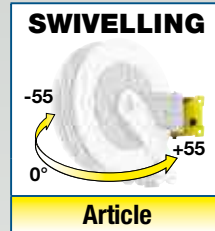
## AISI 304 STAINLESS STEEL

Supplied with:

- AISI 304 stainless steel couplings
- AISI 304 stainless steel swivel joint
- "Viton®" seals (100-200 bar)
- "Teflon®" seals (400 bar)



ATEX directive  
IIB 2 GD c T4 T135 °C X



| Connection |        |
|------------|--------|
| inlet      | outlet |



S. 430

| Water 130 °C | Article  | Article  | F1/2" G | F1/2" G |
|--------------|----------|----------|---------|---------|
| 100 bar      | 8434.200 | 8424.200 | F1/2" G | F1/2" G |
| 200 bar      | 8434.300 | 8424.300 | F3/8" G | F1/2" G |
| 400 bar      | 8434.350 | 8424.350 | F3/8" G | F1/2" G |



S. 530

| Water 130 °C | Article  | Article  | F1/2" G | F1/2" G |
|--------------|----------|----------|---------|---------|
| 100 bar      | 8534.200 | 8524.200 | F1/2" G | F1/2" G |
| 200 bar      | 8534.300 | 8524.300 | F3/8" G | F1/2" G |
| 400 bar      | 8534.350 | 8524.350 | F3/8" G | F1/2" G |



S. 540

| Water 130 °C | Article  | Article  | F1" G   | F1" G   |
|--------------|----------|----------|---------|---------|
| 100 bar      | 8544.200 | 8554.200 | F1" G   | F1" G   |
|              | 8544.205 | 8554.205 | F1/2" G | F1/2" G |
| 200 bar      | 8544.300 | 8554.300 | F3/8" G | F1/2" G |
| 400 bar      | 8544.350 | 8554.350 | F3/8" G | F1/2" G |



S. 560

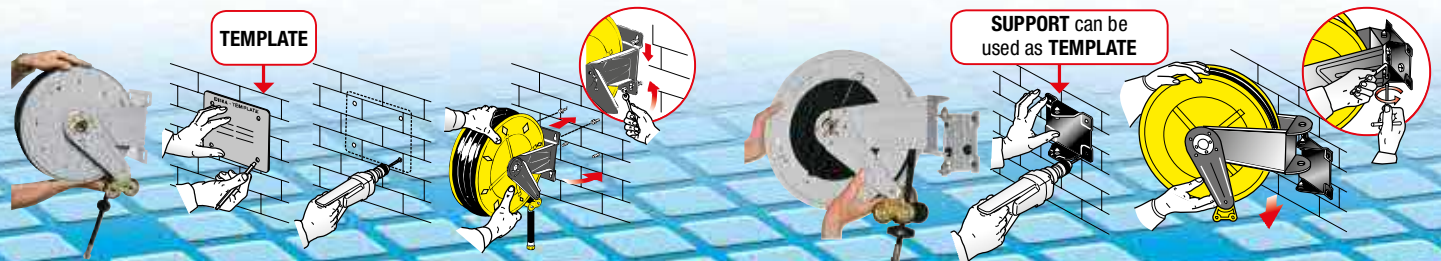
| Water 130 °C | Article  | Article | F1" G   | F1" G   |
|--------------|----------|---------|---------|---------|
| 100 bar      | 8564.200 | -       | F1" G   | F1" G   |
|              | 8564.206 | -       | F1/2" G | F1/2" G |
| 200 bar      | 8564.300 | -       | F3/8" G | F1/2" G |
| 400 bar      | 8564.350 | -       | F3/8" G | F1/2" G |

### FIXED HOSE REELS INSTALLATION

The quick coupling support is equipped with 4 slot holes that allow an easy and safe installation of the hose reels. The **template** supplied facilitates drilling of the holes and therefore hose reels fixing.

### SWIVELLING HOSE REELS INSTALLATION

The **quick coupling swivelling support** facilitates hose reels installation and enables **55° rotation** to the right or left or locking in **fixed positioned at 0°** by means of clamping with two screws.



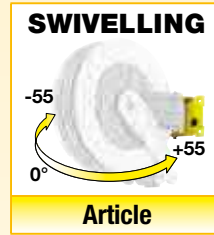


# OIL AND SIMILAR PRODUCTS - 150 bar

## AISI 304 STAINLESS STEEL



ATEX directive  
IIB 2 GD c T4 T135 °C X



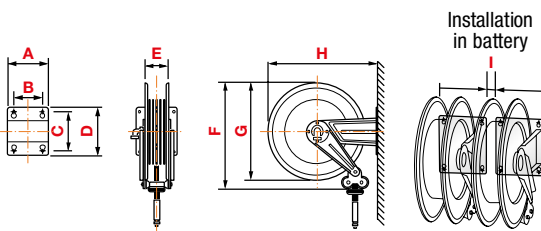
Supplied with:  
- zinc plated steel couplings  
- AISI 304 stainless steel swivel joint  
- "Viton®" seals

| Hose supplied | Connection |        |
|---------------|------------|--------|
|               | inlet      | outlet |



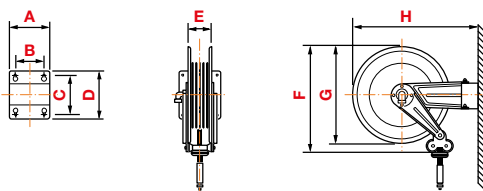
| Article                                    | Article  | Hose supplied | Connection inlet | Connection outlet   |
|--|----------|---------------|------------------|---------------------|
| S. 390                                     | 8392.200 | 8382.200      | without hose     | F1/2"G F 3/8"-1/2"G |
| S. 430                                     | 8434.200 | 8424.200      | without hose     | F1/2"G F1/2"G       |
| for ABS hose reels Series 430 see page 153 |          |               |                  |                     |
| S. 530                                     | 8534.200 | 8524.200      | without hose     | F1/2"G F1/2"G       |
| S. 540                                     | 8544.200 | 8554.200      | without hose     | F1"G F1"G           |

### FIXED OVERALL DIMENSIONS



| Art.   | A   | B   | C   | D   | E   | F   | G   | H   | I  | 1-m <sup>3</sup> | kg*           |
|--------|-----|-----|-----|-----|-----|-----|-----|-----|----|------------------|---------------|
| S. 330 | 186 | 140 | 196 | 226 | 110 | 355 | 350 | 365 | 20 | 0,045            | from 8 to 13  |
| S. 390 | 186 | 140 | 196 | 226 | 110 | 400 | 390 | 410 | 20 | 0,068            | from 11 to 18 |
| S. 430 | 186 | 140 | 196 | 226 | 115 | 460 | 420 | 460 | 20 | 0,098            | from 14 to 24 |
| S. 530 | 203 | 153 | 220 | 258 | 115 | 550 | 510 | 560 | 20 | 0,120            | from 19 to 42 |
| S. 540 | 300 | 218 | 228 | 268 | 190 | 550 | 510 | 573 | 0  | 0,175            | from 24 to 40 |
| S. 560 | 488 | 399 | 238 | 272 | 368 | 550 | 510 | 578 | 0  | 0,310            | from 30 to 80 |

### SWIVELLING OVERALL DIMENSIONS



| Art.   | A   | B   | C   | D   | E   | F   | G   | H   | 1-m <sup>3</sup> | kg            |
|--------|-----|-----|-----|-----|-----|-----|-----|-----|------------------|---------------|
| S. 380 | 184 | 146 | 106 | 144 | 110 | 400 | 390 | 484 | 0,098            | from 12 to 19 |
| S. 420 | 208 | 162 | 118 | 164 | 115 | 460 | 420 | 541 | 0,098            | from 15 to 25 |
| S. 520 | 228 | 182 | 154 | 200 | 115 | 560 | 510 | 642 | 0,120            | from 20 to 43 |
| S. 550 | 300 | 218 | 226 | 268 | 190 | 560 | 510 | 702 | 0,175            | from 25 to 41 |

\* The list shows min and max weight for each series: min weight refers to version without hose, max weight refers to heaviest version which depends on hose length and diameter.