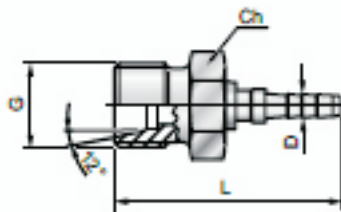
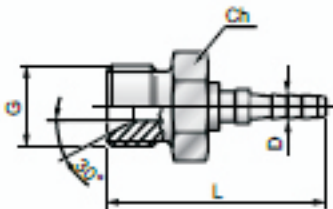


Male fittings

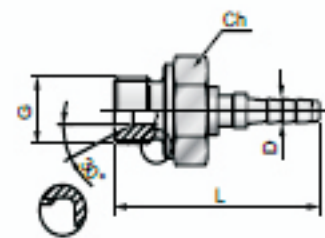


Tube / Hose	G	L	Ch	D	Codice/Ref.
RD2	M12x1.5	30	14	2.0	44MFLR00
	M14x1.5	30	17	2.0	44MFLR10
	M16x1.5	31	19	2.0	44MFLR30
RD3	M12x1.5	34	14	3.0	44MFLR03
	M14x1.5	34	17	3.0	44MFLR13
	M16x1.5	35	19	3.0	44MFLR33
RD4	M12x1.5	35	14	4.0	44MFLR04
	M14x1.5	35	17	4.0	44MFLR14
	M16x1.5	36	19	4.0	44MFLR34

Serie L / L Series

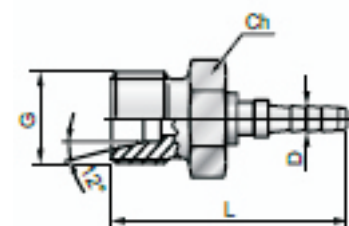


Tube / Hose	G	L	Ch	D	Codice/Ref.
RD2	G 1/8	29	14	2.0	44MFG180
	G 1/4	34	19	2.0	44MFG140
RD3	G 1/8	34.5	14	3.0	44MFG183
	G 1/4	36.5	19	3.0	44MFG143
RD4	G 1/8	37	14	4.0	44MFG184
	G 1/4	36.5	19	4.0	44MFG144
	G 3/8	42.5	22	4.0	44MFG384



Tube / Hose	G	L	Ch	D	Codice/Ref.
RD2	G 1/8	31.5	14	2.0	44MFM180
	G 1/4	35.5	19	2.0	44MFM140
RD3	G 1/8	35	14	3.0	44MFM183
	G 1/4	39	19	3.0	44MFM143
RD4	G 1/8	33.5	14	4.0	44MFM184
	G 1/4	40.5	19	4.0	44MFM144

Tenuta con rondella di rame (non inclusa) / Sealing with copper washer (not included)



Tube / Hose	G	L	Ch	D	Codice/Ref.
RD2	M14x1.5	32	17	2.0	44MFSR00
	M16x1.5*	32	19	2.0	44MFSR10
	M18x1.5	33.5	22	2.0	44MFSR20
RD3	M14x1.5	36	17	3.0	44MFSR03
	M16x1.5	36	19	3.0	44MFSR13
	M18x1.5	36.5	22	3.0	44MFSR23
RD4	M14x1.5	37	17	4.0	44MFSR04
	M16x1.5	37	19	4.0	44MFSR14
	M18x1.5	38.5	22	4.0	44MFSR24
	M20x1.5	39	24	4.0	44MFSR34

Serie S / S Series

*Disponibile in INOX / Available in Stainless steel