



CARATTERISTICHE TECNICHE
 TECHNICAL CHARACTERISTICS
 TECHNISCHE ANGABEN
 CARACTÉRISTIQUES TECHNIQUES
 CARACTERÍSTICAS TÉCNICAS
 CARACTERÍSTICAS TÉCNICAS



Norma di Riferimento
 Reference standard
 Entspricht der Norm
 Norme de référence
 Normativa de referencia
 Norma de referência

1907/2006

REACH

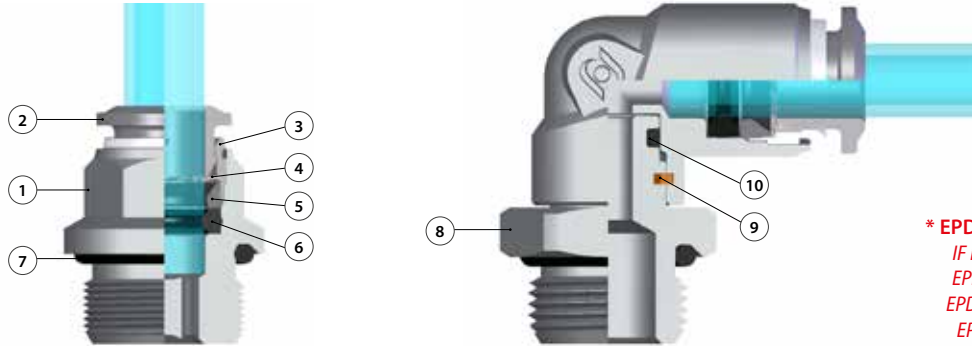
2011/65/CE

RoHS

PED
2014/68/UE

ISO
14743:2020

SILICON
FREE



*** EPDM A RICHIESTA**
 IF REQUESTED EPDM
 EPDM AUF ANFRAGE
 EPDM SUR DEMANDE
 EPDM BAJO PEDIDO
 EPDM SOB ENCOMENDA

| Materiali e Componenti | IT | Component Parts and Materials | GB | Komponenten und Materialien | DE |
|--|----|--|----|--|----|
| 1 Corpo in ottone nichelato | | 1 Nickel-plated brass Body | | 1 Körper Messing vernickelt | |
| 2 Spintore sgancio tubo in Ottone nichelato | | 2 Nickel-plated brass Collet | | 2 Rohr Lösering Messing vernickelt | |
| 3 Capsula in ottone nichelato | | 3 Nickel-plated brass Capsule | | 3 Haltering Messing vernickelt | |
| 4 Pinza d'aggraffaggio in acciaio inox AISI 301 | | 4 Steel AISI 301 Clamping washer | | 4 Zahnscheibe Edelstahl AISI 301 | |
| 5 Anello di posizionamento in tecnopolimero | | 5 Technopolymeric positioning ring | | 5 Positionierring Technopolymer | |
| 6 Guarnizione sagomata in NBR (EPDM a richiesta) | | 6 NBR Molded seal (if requested EPDM) | | 6 Lippendichtung NBR (EPDM auf Anfrage) | |
| 7 Guarnizione filetto in NBR (EPDM a richiesta) | | 7 NBR Thread packing (if requested EPDM) | | 7 Gewindeabdichtung NBR (EPDM auf Anfrage) | |
| 8 Basetta Filettata in Ottone Nichelato | | 8 Base Threaded Nickel Plated Brass | | 8 Gewindebasis Messing vernickelt | |
| 9 Seeger | | 9 Seeger | | 9 Seeger | |
| 10 Guarnizione in NBR (EPDM a richiesta) | | 10 NBR seal (if requested EPDM) | | 10 Lippendichtung NBR (EPDM auf Anfrage) | |

| Matériaux et Composants | FR | Materiales y Componentes | ES | Materiais e Componentes | PT |
|--|----|--|----|--|----|
| 1 Corps: Laiton nickelé | | 1 Cuerpo en latón niquelado | | 1 Corpo em latão niquelado | |
| 2 Pousoir: Laiton nickelé | | 2 Anillo de extracción tubo en latón niquelado | | 2 Anilha de liberação em latão niquelado | |
| 3 Capsule de retenue: Laiton nickelé | | 3 Cápsula en latón niquelado | | 3 Cápsula de latão niquelado | |
| 4 Rondelle d'accrochage: AISI 301 | | 4 Pinza de agarre en acero inox AISI 301 | | 4 Pinça de travamento em aço-inox AISI 301 | |
| 5 Anneau de positionnement: Technopolymère | | 5 Anillo de posicionamiento en tecnopolímero | | 5 Anel de posicionamento em tecnopolímero | |
| 6 Joint à lèvre: NBR (EPDM sur demande) | | 6 Junta de forma en NBR (EPDM bajo pedido) | | 6 Vedação em NBR (EPDM sob encomenda) | |
| 7 Joint d'étanchéité du filetage: NBR (EPDM sur demande) | | 7 Junta rosca en NBR (EPDM bajo pedido) | | 7 Vedação da rosca em NBR (EPDM sob encomenda) | |
| 8 Bague de sécurité en laiton nickelé | | 8 Base rosca en latón niquelado | | 8 Base rosca en latão niquelado | |
| 9 Seeger | | 9 Seeger | | 9 Seeger | |
| 10 Joint en NBR (EPDM sur demande) | | 10 Junta en NBR (EPDM bajo pedido) | | 10 Vedação em NBR (EPDM sob encomenda) | |



Pressioni

- Pressures
- Druckbereich
- Pressions
- Presiones
- Pressões

- 0.99 bar (-0.099 MPa)
20 bar (2.0 MPa)



Fluidi compatibili

Aria compressa / Vuoto / Acqua / Vapore (EPDM)

Fluids

Compressed air / Vacuum / Water / Steam (EPDM)

Geeignete Medien

Druckluft / Vakuum / Wasser / Dampf (EPDM)

Fluides compatibles

Air comprimé / Vide / Eau / Vapeur (EPDM)

Fluidos compatibles

Aire comprimido / Vacío / Agua / Vapor (EPDM)

Fluidos compatíveis

Ar comprimido / Vácuo / Água / Vapor (EPDM)



Temperature

Temperatures

Temperatur

Températures

Temperaturas

Temperaturas

- 20 °C
+ 80 °C

EPDM

- 40 °C
+ 130 °C



Tubi di Collegamento

Tubi in materiale plastico:
 PA6, PA11, PA12, Polietilene, *Poliuretano, PTFE, FEP.
 *Utilizzo da 90 a 98 Shore, per la massima prestazione è consigliato 98 Shore A.

Connection Tubes

Plastic tubes:
 PA6, PA11, PA12, Polyethylene, *Polyurethane, PTFE, FEP.
 *Use from 90 to 98 Shore, for maximum performance is recommended 98 Shore A.

Geeignete Rohre

Kunststoffrohre:
 PA6, PA11, PA12, Polyethylene, *Polyurethan, PTFE, FEP.
 *Verwenden Sie 90 bis 98 Shore, für maximale Leistung wird 98 Shore A empfohlen.

Tubes Conseillés

Tubes plastiques:
 PA6, PA11, PA12, Polyéthylène, *Polyuréthane, PTFE, FEP.
 *Utilisation de 90 à 98 Shore, pour une performance maximale recommandée 98 Shore A.

Tubos de Conexión

Tubos en material plástico:
 PA6, PA11, PA12, Polietileno, *Poliuretano, PTFE, FEP.
 *Uso de 90 a 98 Shore, para un máximo rendimiento se recomienda 98 Shore A.

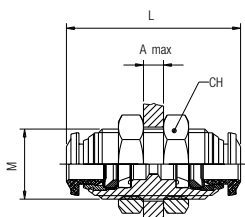
Tubos de Conexão

Tubos em material plástico:
 PA6, PA11, PA12, Polietileno, *Poliuretano, PTFE, FEP.
 *Uso de 90 a 98 Shore, para o desempenho máximo é recomendado 98 Shore A.

57050

RACCORDO DIRITTO INTERMEDIO DI ATTRAVERSAMENTO

BULKHEAD CONNECTOR
 SCHOTTVERSCHRAUBUNG
 RACCORD TRAVERSÉE DE CLOISON
 RACOR RECTO INTERMEDIO PASATABIQUES
 CONEXÃO PASSA-MURO RETA TUBO-TUBO

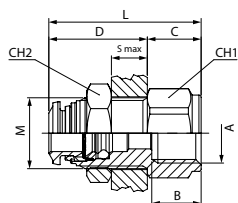


| Code | Tube | M | L | CH | A max | Pack. |
|----------------|----------|-------|------|----|-------|-------|
| * 57050 00 001 | 4 (5/32) | M12x1 | 31.5 | 17 | 7 | 10 |
| 57050 00 006 | 5 | M14x1 | 33 | 17 | 7 | 10 |
| 57050 00 002 | 6 | M14x1 | 35 | 17 | 9.5 | 10 |
| 57050 00 009 | 8-6 | M16x1 | 37 | 19 | 10.5 | 10 |
| * 57050 00 003 | 8 (5/16) | M16x1 | 37 | 19 | 10.5 | 10 |
| 57050 00 010 | 10-6 | M20x1 | 43 | 24 | 11.5 | 10 |
| 57050 00 011 | 10-8 | M20x1 | 43 | 24 | 12.5 | 10 |
| 57050 00 004 | 10 | M20x1 | 43 | 24 | 12.5 | 10 |
| 57050 00 005 | 12 | M22x1 | 48 | 26 | 16.5 | 10 |

57055

RACCORDO DIRITTO DI ATTRAVERSAMENTO FEMMINA

FEMALE BULKHEAD CONNECTOR
 SCHOTTVERSCHRAUBUNG INNENGEWINDE
 TRAVERSÉE DE CLOISON FEMELLE
 RACOR RECTO INTERMEDIO PASATABIQUES HEMBRA
 CONEXAO PASSA-MURO RETA FEMEA

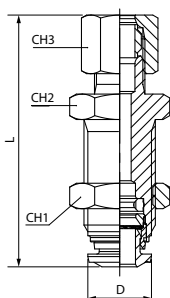


| Code | Tube | A | B | M | S max | CH1 | CH2 | C | D | L | Pack. |
|--------------|------|-----|-----|-------|-------|-----|-----|----|------|------|-------|
| 57055 00 001 | 4 | 1/8 | 8.5 | M12X1 | 7 | 15 | 17 | 10 | 19 | 29 | 10 |
| 57055 00 002 | 6 | 1/8 | 8.5 | M14X1 | 8 | 16 | 17 | 10 | 21 | 31 | 10 |
| 57055 00 003 | 6 | 1/4 | 11 | M14X1 | 8 | 16 | 17 | 12 | 21 | 33 | 10 |
| 57055 00 004 | 8 | 1/8 | 8.5 | M16X1 | 8 | 18 | 19 | 10 | 22 | 32 | 10 |
| 57055 00 005 | 8 | 1/4 | 11 | M16X1 | 8 | 18 | 19 | 12 | 22 | 34 | 10 |
| 57055 00 006 | 10 | 3/8 | 12 | M20X1 | 9.5 | 24 | 24 | 14 | 25.5 | 39.5 | 10 |
| 57055 00 007 | 12 | 3/8 | 12 | M22X1 | 10.5 | 24 | 26 | 15 | 27.5 | 42.5 | 10 |
| 57055 00 008 | 12 | 1/2 | 15 | M22X1 | 10.5 | 24 | 26 | 17 | 27.5 | 44.5 | 10 |

57465

ADATTATORE DIRITTO INTERMEDIO DI ATTRAVERSAMENTO

BULKHEAD CONNECTOR
 SCHOTTVERSCHRAUBUNG
 ADAPTEUR DROIT TRAVERSEE DE CLOISON
 RACOR RECTO INTERMEDIO PASATABIQUES
 CONEXAO PASSA-MURO RETA TUBO-TUBO

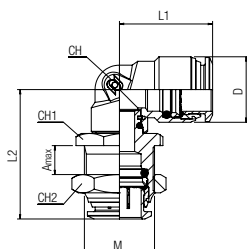


| Code | Tube | L | D | CH1 | CH2 | CH3 | Pack. |
|--------------|------|------|------|-----|-----|-----|-------|
| 57465 00 002 | 6 | 49.5 | 12.5 | 13 | 17 | 17 | 10 |
| 57465 00 003 | 8 | 52 | 14 | 14 | 19 | 19 | 10 |
| 57465 00 004 | 10 | 59 | 17 | 19 | 24 | 24 | 10 |

57060

RACCORDO A L ORIENTABILE INTERMEDIO DI ATTRAVERSAMENTO

BULKHEAD ORIENTING ELBOW
 WINKEL-SCHOTTVERSCHRAUBUNG (DREHBAR)
 RACCORD EQUERRE ORIENTABLE A TRAVERSEE DE CLOISON
 RACOR A L ORIENTABLE INTERMEDIO PASATABIQUES
 CONEXÃO PASSA-MURO EM "L" ORIENTÁVEL



| Code | Tube | M | L1 | L2 | CH | CH1 | CH2 | Amax | D | Pack. |
|----------------|----------|-------|------|----|----|-----|-----|------|------|-------|
| * 57060 00 003 | 4 (5/32) | M12x1 | 17.5 | 26 | 9 | 14 | 17 | 6 | 10 | 10 |
| 57060 00 004 | 6 | M14x1 | 21.5 | 31 | 11 | 16 | 17 | 6.5 | 12.5 | 10 |
| * 57060 00 005 | 8 (5/16) | M16x1 | 22 | 34 | 12 | 18 | 19 | 6.5 | 14.5 | 10 |
| 57060 00 006 | 10 | M20x1 | 26.5 | 36 | 14 | 22 | 24 | 7.5 | 17.5 | 10 |
| 57060 00 007 | 12 | M22x1 | 30.5 | 43 | 16 | 24 | 26 | 9 | 21.5 | 10 |
| 57060 00 008 | 14 | M23x1 | 30.5 | 43 | 16 | 25 | 27 | 9.5 | 21.5 | 10 |